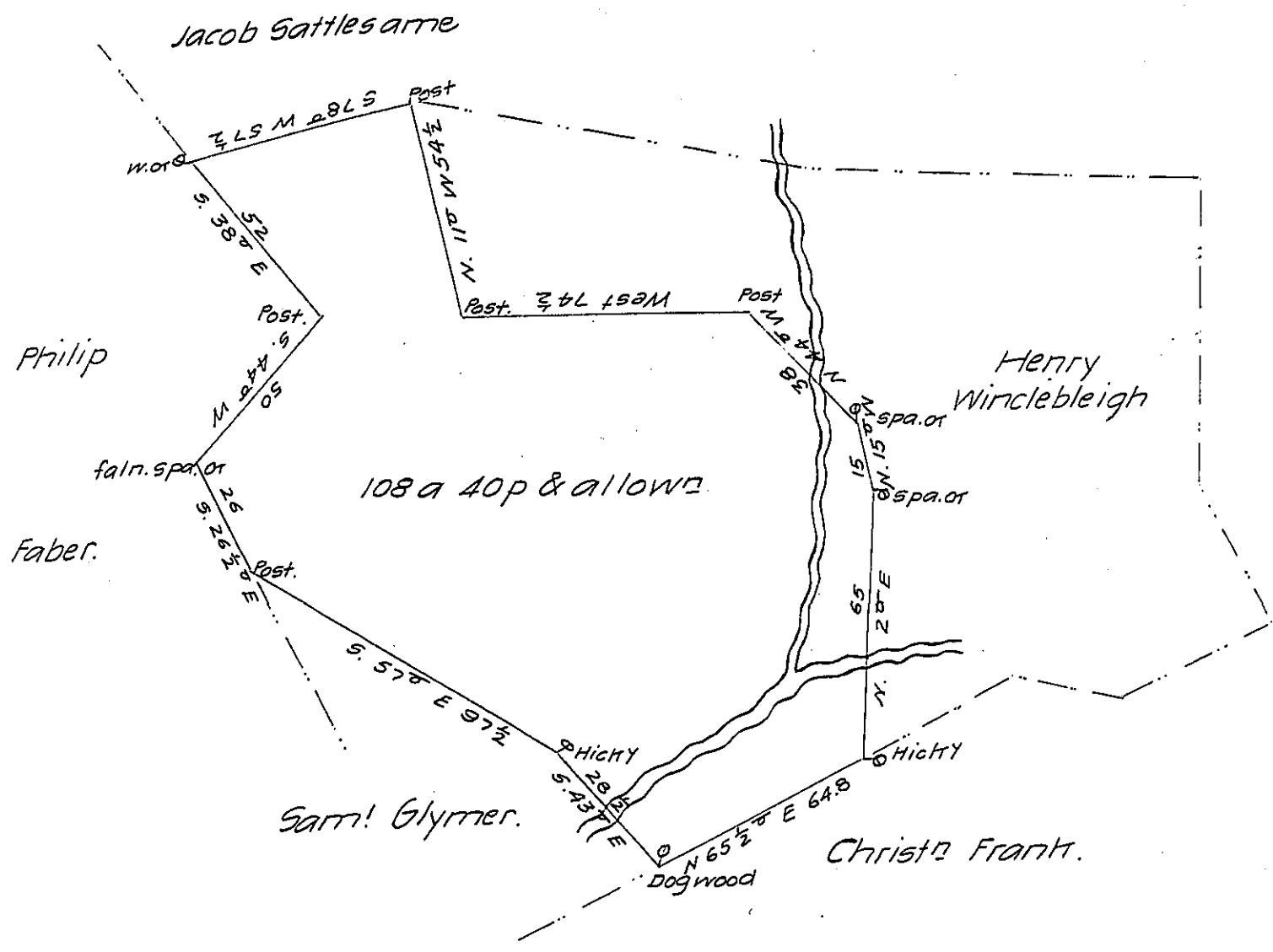


FORM NO 1.



Situate in Swetara township, Lebanon County, Containing one hundred & eight acres forty perches & allowance of Six P.Ct. part of two hundred & five acres & fifteen perches & allowance granted to Henry & Adam Winklebleigh ^{Junr} by Warrant of the 27th day of April 1824. Surveyed the 29th April 1824.

Levi G. Hollingsworth D.S.

Saml Cochran Esqr.

Surveyor Genl

IN TESTIMONY that the above is a copy of the original remaining on file in the Department of Internal Affairs of Pennsylvania, made conformably to an Act of Assembly approved the 16th day of February, 1833, I have hereunto set my Hand and caused the Seal of said Department to be affixed at Harrisburg, this fourteenth day of June 1907

Henry Houck
Secretary of Internal Affairs.